



Working and feeling good needn't be contradictions in terms. Zenith helps you find your personal work-life balance. This is the way of the future – because great ideas flourish best in a relaxed and attractive environment.



Designed to...

... make you feel good

Zenith was designed by the internationally renowned architects Michel Macary and Luc Delamain (SCAU) and the Belgian architect José Vandevorde (CERAU). Characteristic of it are its asymmetry and the different heights of the three structures. The dynamic that this creates not only breathes liveliness into the office building itself, it also has a positive influence on the surrounding area. The tree-lined boulevard leads visitors right up to the prestigious lobby, where they are treated to a spacious and hearty welcome.

Inside the building, green oases in the form of large balconies on six levels and a roof terrace provide an opportunity to relax at work. Tenants and visitors can enjoy the magnificent and unparalleled view over Brussels. And for longer breaks, Parc Gaucheret right next to the building is perfect.

... meet all needs

The technical fittings are designed to create a comfortable environment for the people who live and work in Zenith. Whether it be the exacting security standards, the façade concept designed for comfort and that promotes the contact with the outside world, the energy-efficient building concept and the optimised utilisation of daylight that goes with it, or the holistic sustainability standards – which can be seen, for example, in the energy-efficient heating and cooling system, the structural engineering of Zenith is designed to save resources and be natural.



Visualisation of the entrance hall

You never work alone

9 to 5 is a thing of the past. Working is more than that in today's world. Zenith gives its tenants everything they need to make their working day more pleasurable and more effective.



Concierge Service

Time is precious and irreplaceable – so Zenith saves it for you right where you are. From urgent courier services and travel bookings to table reservations for business meals, from organising dry-cleaning to obtaining last-minute gifts or flowers for Valentine's Day. The Zenith Concierge fulfils your (almost) every desire.



Food and Drink

Be it breakfast, lunch or a snack in-between – nutrition is important for our general well-being. Zenith has space for a restaurant area with an arboreal terrace, and offers a quality catering service that all tenants can use at any time.



Conference Rooms

It is important to be flexible. Tenants have uncomplicated access to additional rooms that they may need at short notice. In the foyer, Zenith offers extra space for meetings that can be booked as required with the Concierge.



Transport

Need to get to an important business meeting? Or did you just want to hop into town on your lunch break? Zenith offers a shuttle bus into the city centre every 15 minutes between midday and 2 p.m. Cyclists will find a bike station right next to the building. Or simply take the nearby underground train, which takes you to the centre of town in no time flat.



Security

Peace of mind through security. Alongside the numerous CCTV cameras in and around the building, controlled in Zenith's own surveillance room, a security company also watches over Zenith at night. In addition to the customary access controls, the elevator system does not allow direct access from the parking garage to the tenant areas: every visitor has to go through the lobby first. The underground parking is secured during the day with two fast-opening gates and an additional main gate in the evenings. This means that employees working longer hours needn't fear for their safety when getting to their car. The neighbouring police academy means the area is more highly policed than most – a good feeling for people working here. And, of course, the latest techniques and know-how in the field of fire safety were used when designing Zenith.

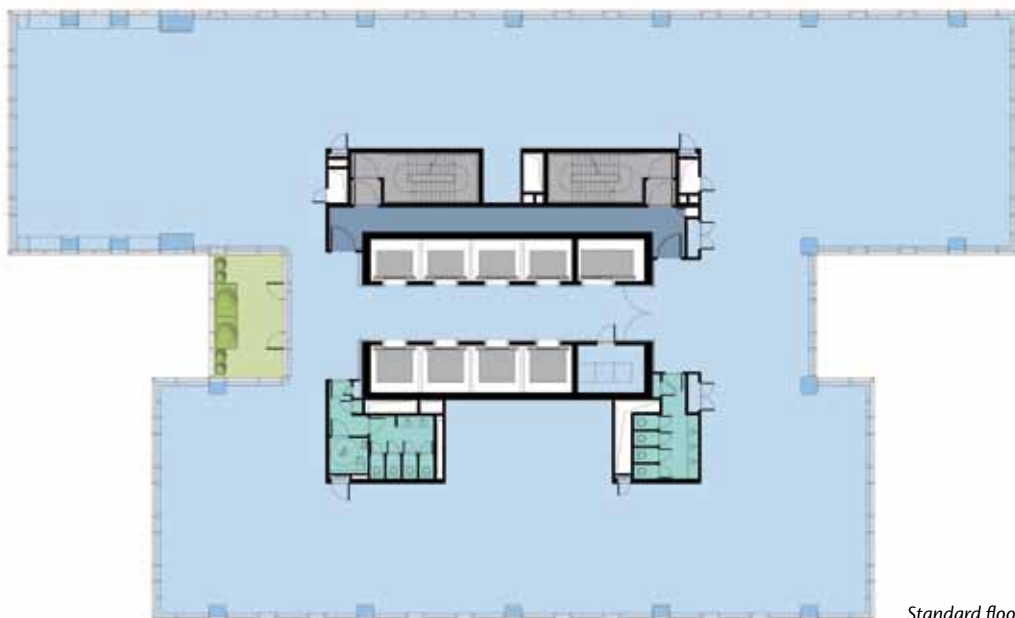




Configure your space

Zenith – 30,000 m² of office space on 20 floors. Tenants have a wide range of options for the space they want to rent: the storeys can be divided up by floor and across floors. The smallest rentable unit is 513 m².

There is also an underground car park with three levels and 171 parking spaces, plus room for bicycles.



Standard floor (11th)

The floor spaces in brief

Lobby: approx. 850 m²

Floor 1: approx. 1,850 m²

Floors 2 to 17: from approx. 1,480 m² to approx. 1,540 m²

Floors 18 to 20: approx. 1,030 m² to 1,080 m²



Top location

*Efficient, multifunctional use
and division of space*

High level

Exacting security and safety standards

Low operating costs

*Meets the toughest demands
on energy efficiency and sustainability*

Best views

Contact



Mathias Jeffmar

Tel.: +32 2 649 40 54

E-mail: contact@zenith-building.com

Project website

www.zenith-building.com

ZENITH
BUILDING

Zenith Photos: Vincent Duterne; Entrance hall visualisation: Michel Penneman, DETROIS S.A.

Disclaimer:

This publication – including the suggested partitioning of the rental space – is not a binding offer. The information it contains has been carefully researched, however, the building owner, Gaucheret SA, Boulevard Louis Schmidlaan 29, 1040 Brussels, cannot accept any liability for its correctness, completeness or timeliness (as at June 2011). The sole binding basis for all information relating to this property are officially authorised construction plans, the specifications, other public law permits and the respective tenancy agreements. Pictures and illustrations of the buildings are not necessarily to scale and originate from the illustrator's view of the buildings. All copy, photographs and illustrations are protected by copyright and other industrial property laws. They may only be used for personal, non-commercial purposes.